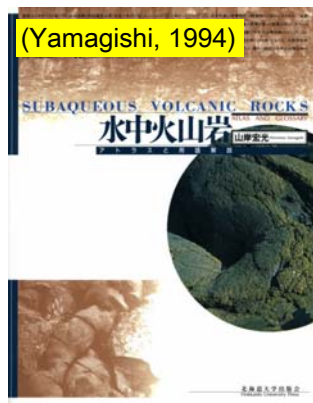
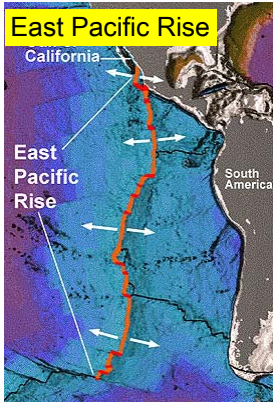


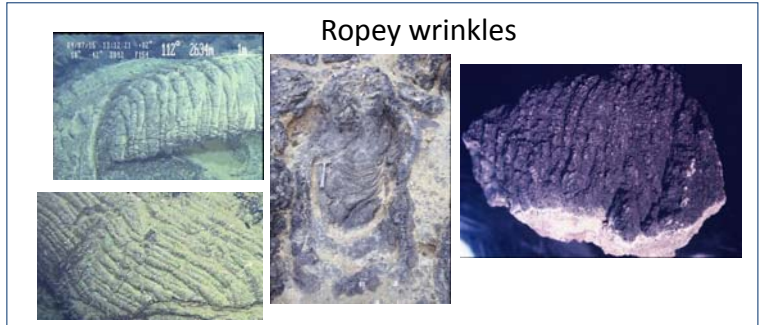
D4-6 COMPARISON BETWEEN RECENT DEEP-SEA PILLOW LAVAS AND ANCIENT ANALOGUES

**HIROMITU YAMAGISHI (e-mail:hiromitsuyamagishi88@gmail.com)
JAPAN (SHIN ENGINEERING CONSULTANT CO.LTD)**

- 1) **JAMSTEC** has been providing many recent deep-sea pillow lavas by the Website as database
- 2) Yamagishi printed a book including photos of many **geologic time pillow lavas** and associated fragmental rocks (until 1985) in geologic times from Precambrian to Quaternary in the world (Yamagishi, 1994)
- 3) This paper present **the comparison between the surface structures of recent pillow lavas in depth (less than 3000m) and geologic time analogous in more shallow depth(less than 1000m)**



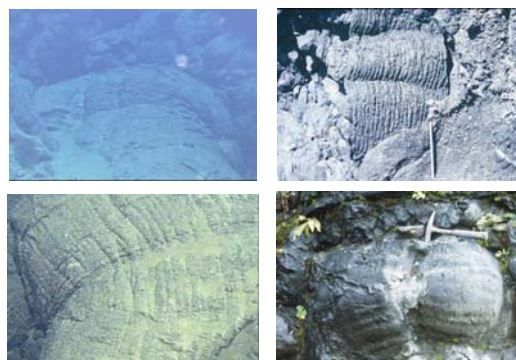
East Pacific Rise (Left) and Geologic time(Right) The same in each topic photo



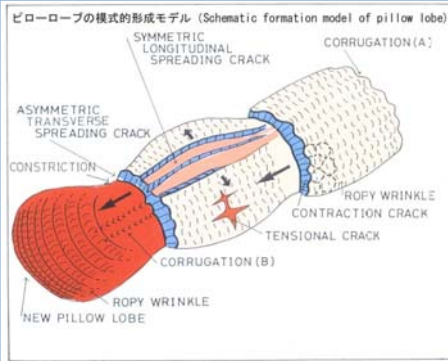
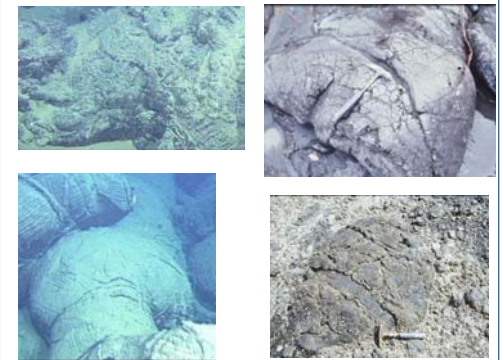
Corrugation (B)



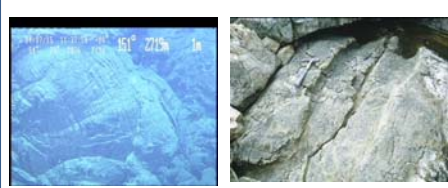
Corrugation (A)



Transverse Asymmetric Spreading cracks



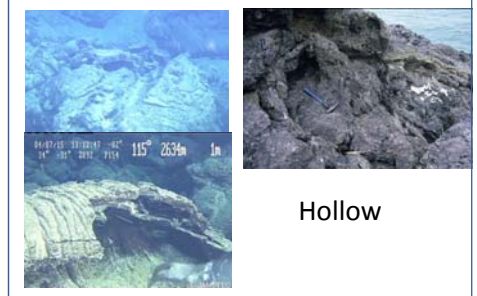
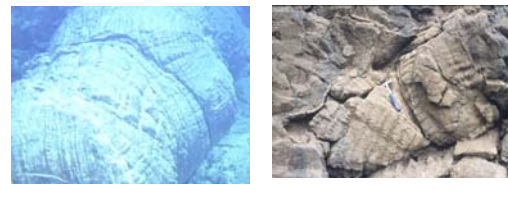
Longitudinal Spreading cracks



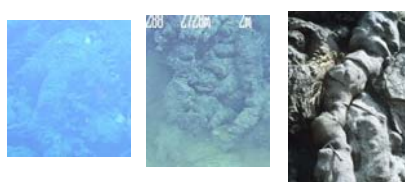
Transverse and longitudinal Spreading cracks



Transverse Symmetric Spreading cracks



Elephant trunk



Schematic Model of Pillow lobes (Yamagishi, 1985)

Conclusion

- 1) However, comparing between the recent deep-sea pillow lavas and the geologic time ones in any depth, has revealed that there are many similarities .
- 2) The photos of the deep-sea pillow lavas are not so high resolution and the viewing scope is narrow; therefore the precise interpretation is limited.

